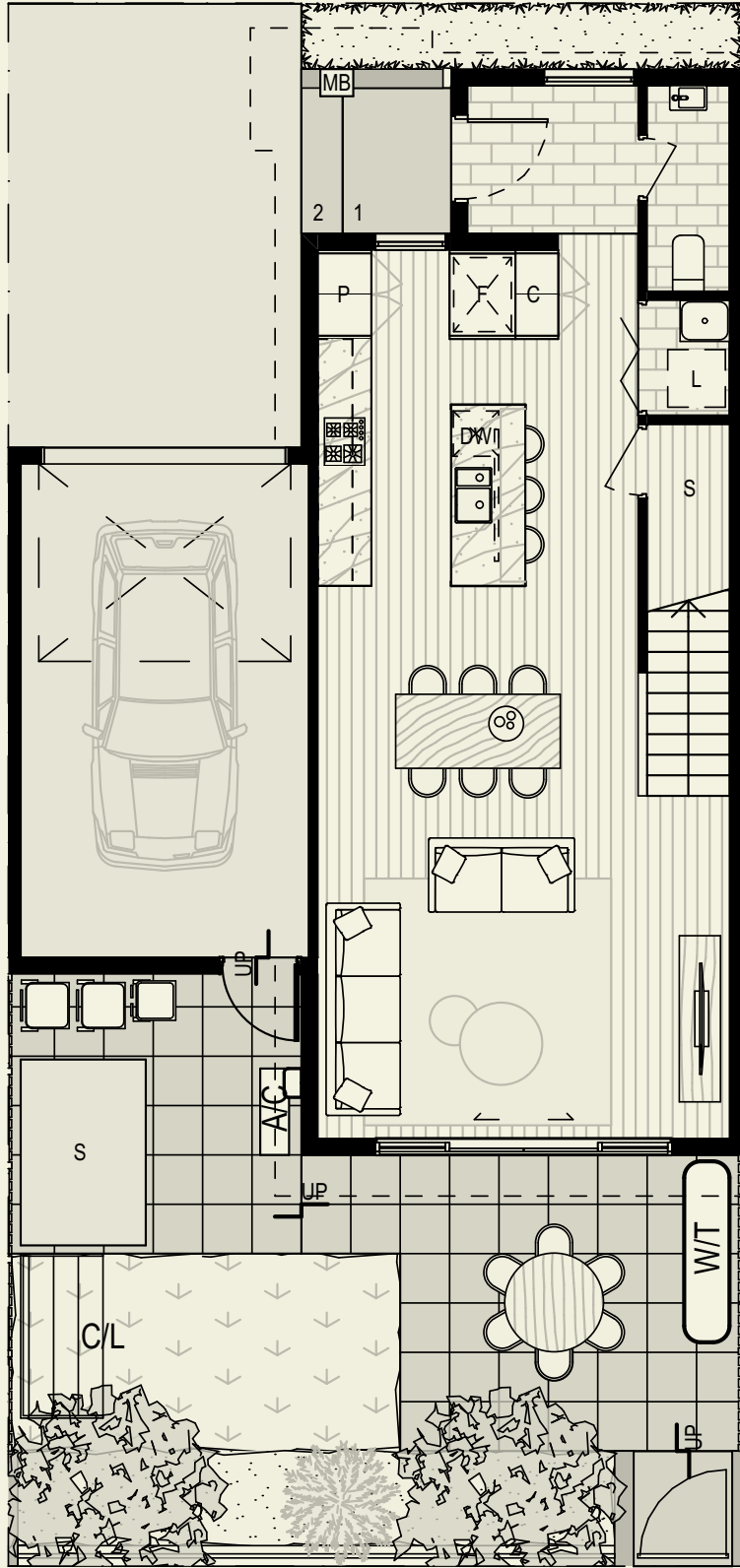
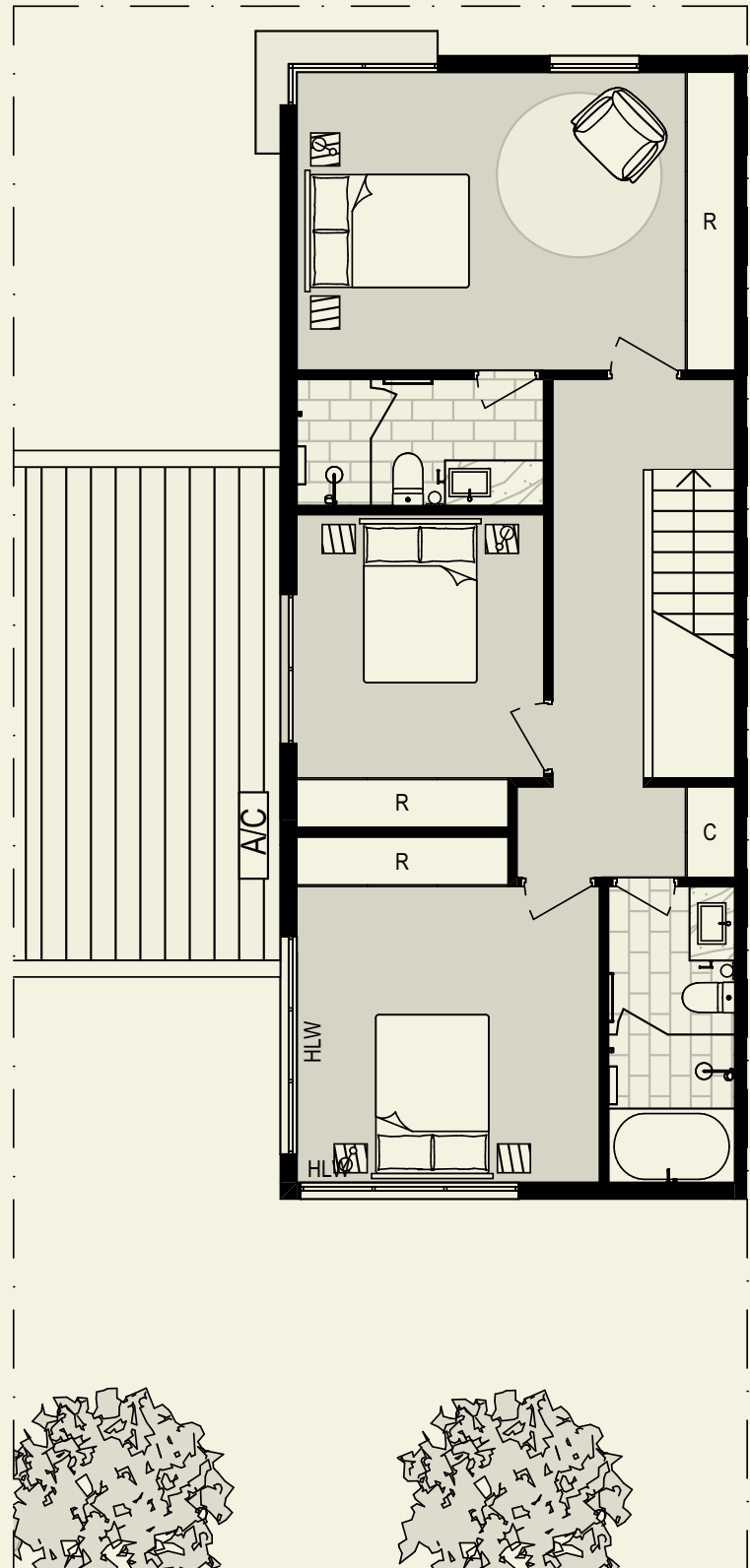


Townhome Type C

3 bedrooms & 2 bathrooms



Ground floor



First floor

Bedroom	3	Ground floor	66.4m ²
Bathroom	2	First floor	75.1m ²
Powder room	1	Garage	23.3m ²
Living	1	Driveway	19.2m ²
Garage car space	1	Front yard	7.9m ²
Driveway car space	1	Rear yard	52.4m ²
		Total	244.3 m²



Contact

thebottleworksgeelong.com.au